

Hugo

regarde

un vieux meuble bleu.

Léa

entend

des grelots.

Le vieux coffre

est

ouvert.

Grand-père

montre

son jeu préféré.

Les enfants

sont

heureux de leur journée.

Le lapin

se cache

près du feu.





A large, empty rectangular box with a black border, intended for writing or drawing.



A large, empty rectangular box with a black border, intended for writing or drawing.



A large, empty rectangular box with a black border, intended for writing or drawing.





A large, empty rectangular box with a black border, intended for text or drawing.



A large, empty rectangular box with a black border, intended for text or drawing.



A large, empty rectangular box with a black border, intended for text or drawing.



Louka

ouvre

le tiroir du meuble.

Elle

trouve

une feuille sous la  
chaise.

Un petit feu

brûle

près de la cabane.

Le ciel

devient

bleu après la pluie.

Les enfants

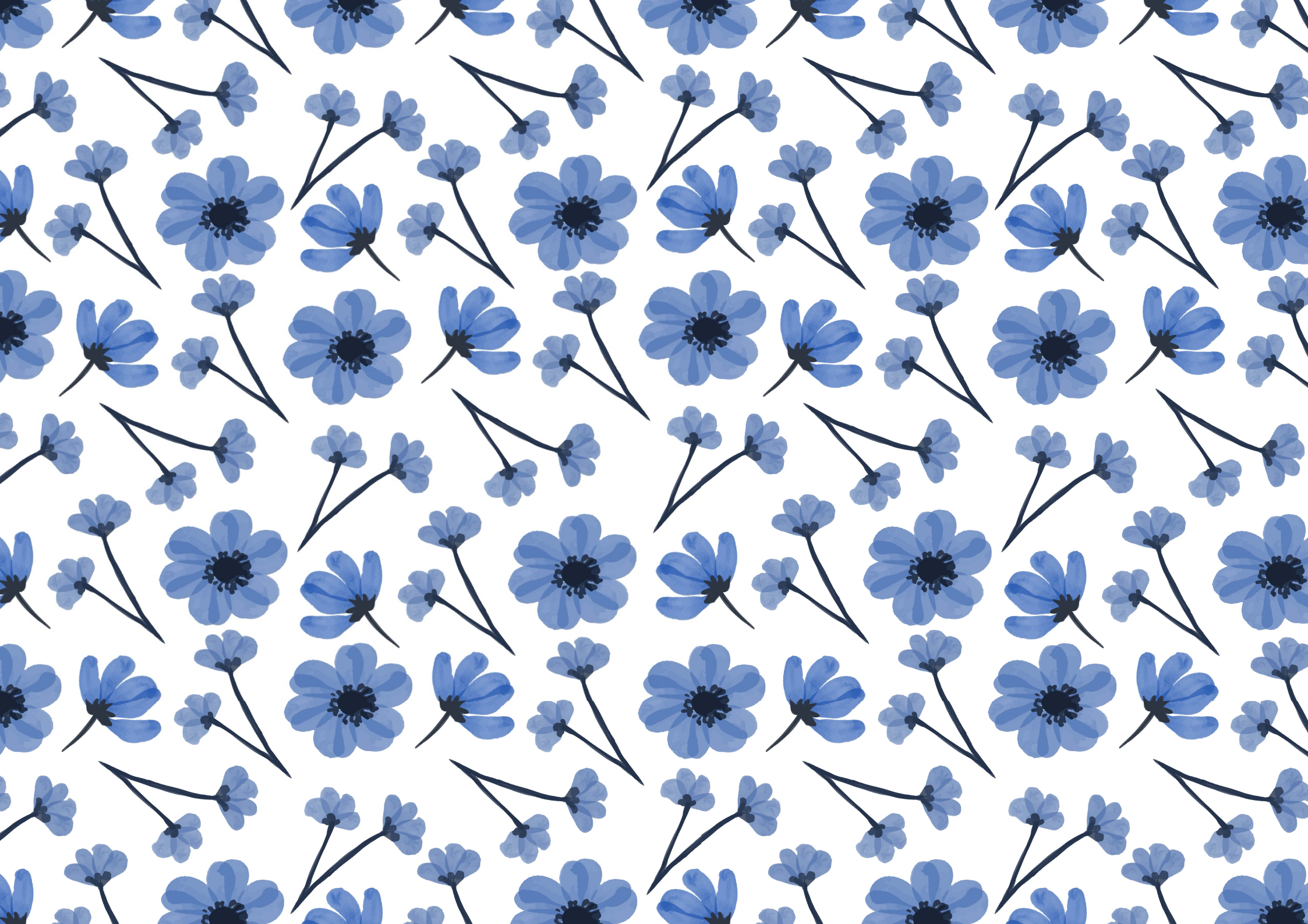
ne sont pas

heureux ce matin.

Une jolie fleur

pousse

près du mur.





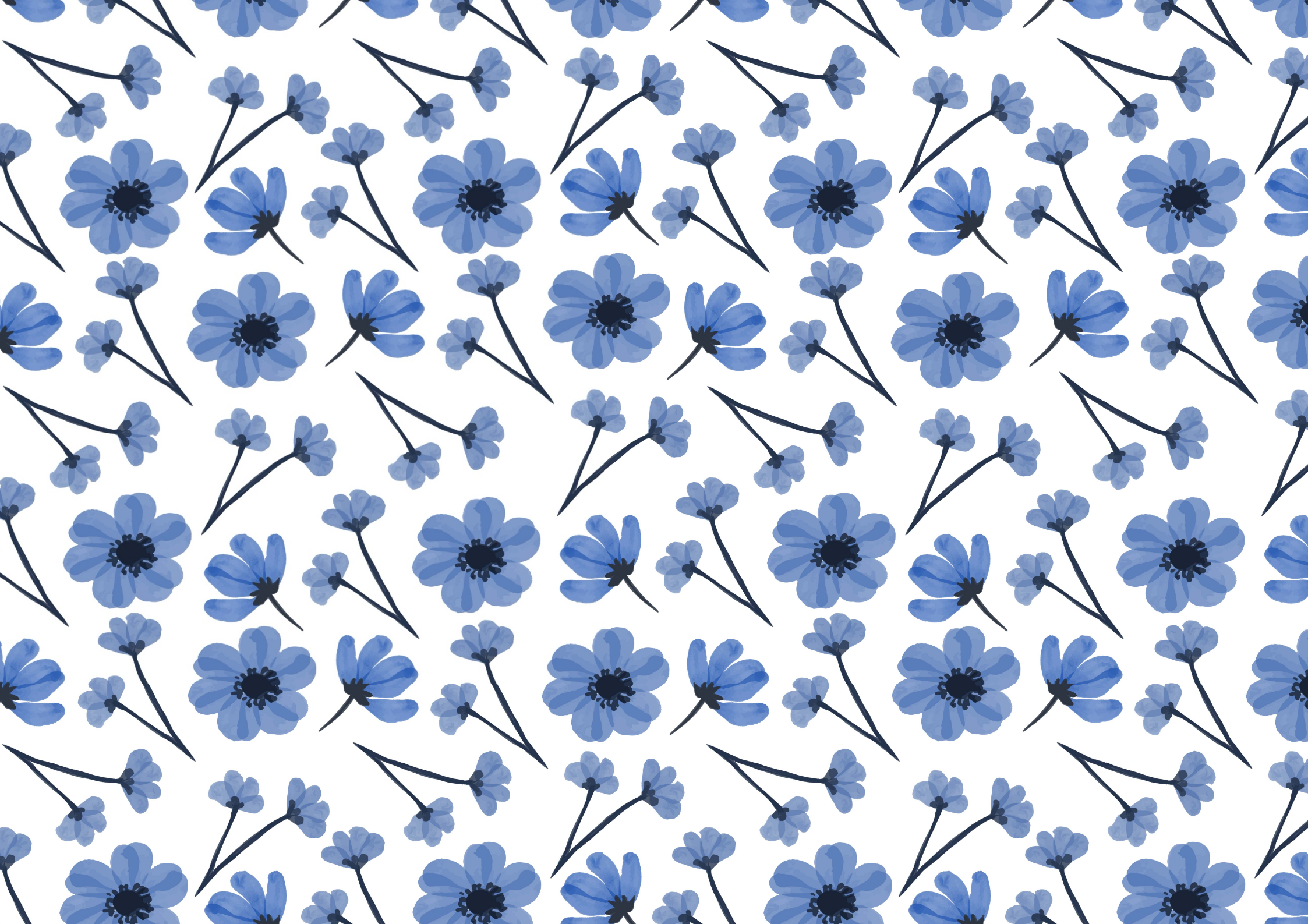
A large, empty rectangular box with a black border, intended for text or a drawing.



A large, empty rectangular box with a black border, intended for text or a drawing.



A large, empty rectangular box with a black border, intended for text or a drawing.





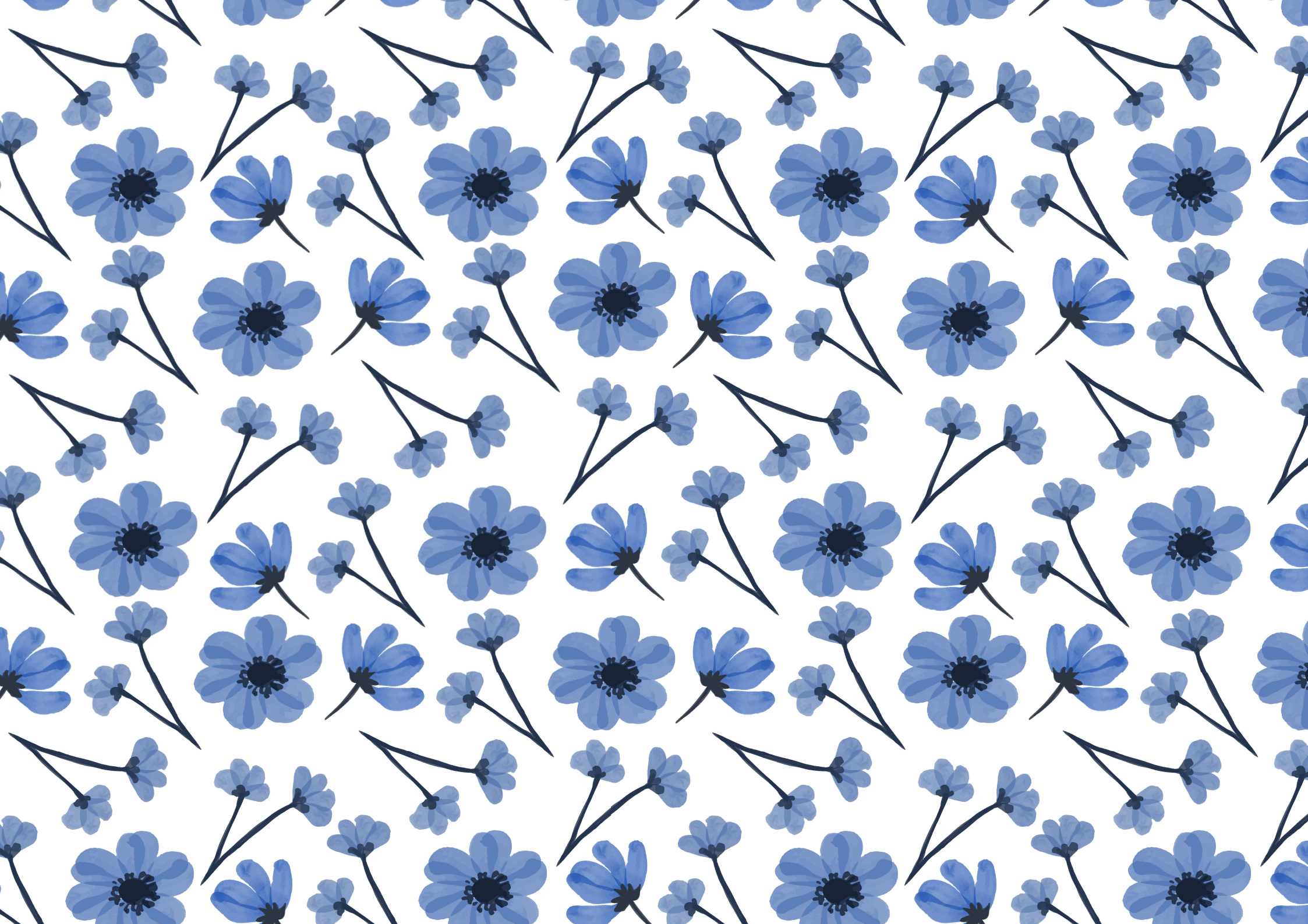
A large, empty rectangular box with a black border, intended for text or drawing.



A large, empty rectangular box with a black border, intended for text or drawing.



A large, empty rectangular box with a black border, intended for text or drawing.



Patrick

apporte

un nouveau jeu.

Le petit garçon

reste

seul après l'école.

L'heure

est

fausse sur la montre.

Grand-mère

utilise

son fauteuil aujourd'hui.

Mon frère

est

le plus jeune de la classe.

Elle

a acheté

un sac tout neuf.





A large, empty rectangular box with a black border, intended for text or a drawing.



A large, empty rectangular box with a black border, intended for text or a drawing.



A large, empty rectangular box with a black border, intended for text or a drawing.





A large, empty rectangular box with a black border, intended for text or a drawing.



A large, empty rectangular box with a black border, intended for text or a drawing.



A large, empty rectangular box with a black border, intended for text or a drawing.



Adèle

utilise

son feutre bleu.

Mirca

a

peur du noir.

Romain

veut

des bonbons.

La pieuvre

nage

dans la mer.

Le chauffeur

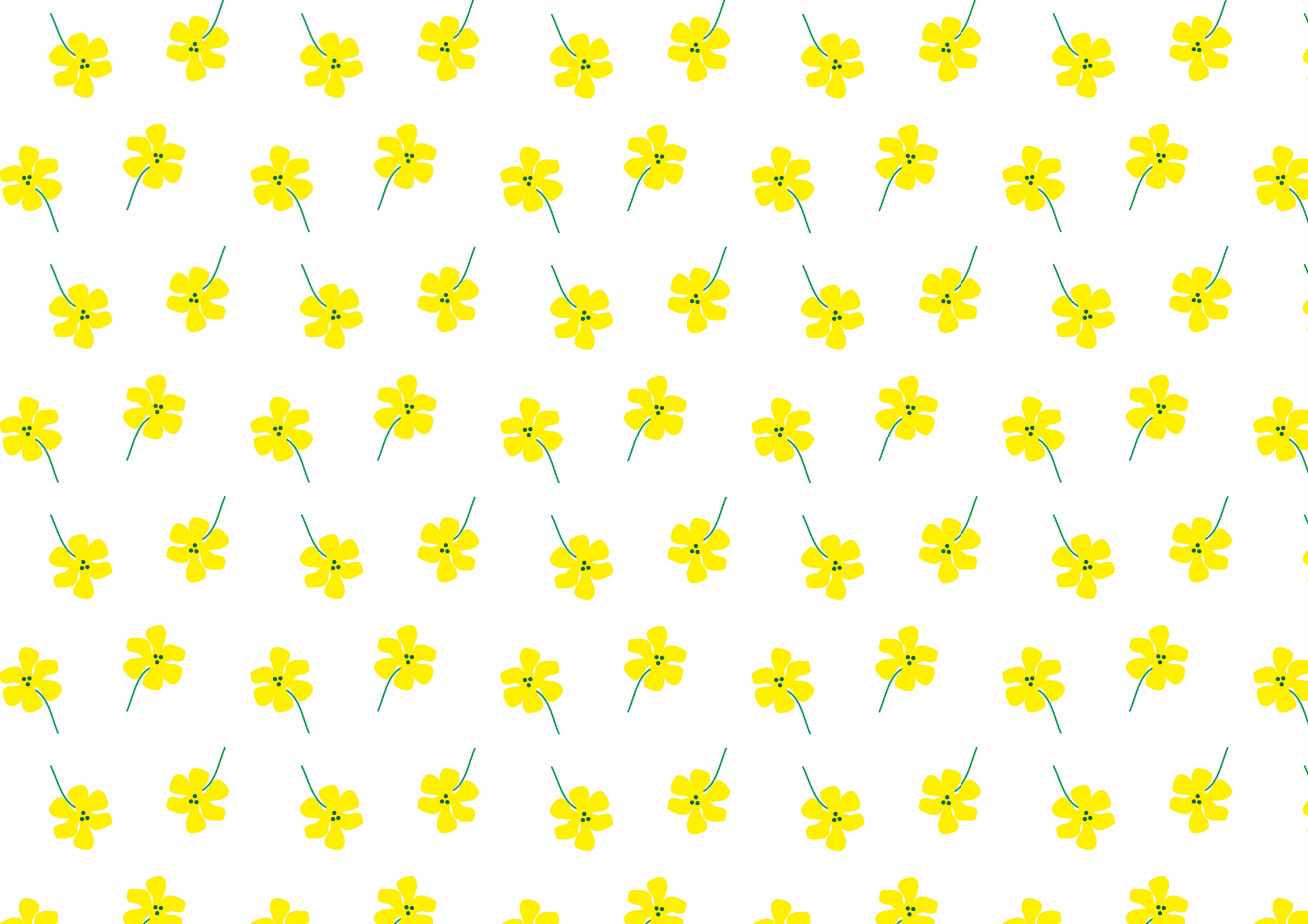
conduit

son bus.

Louis

a

une douleur au genou.





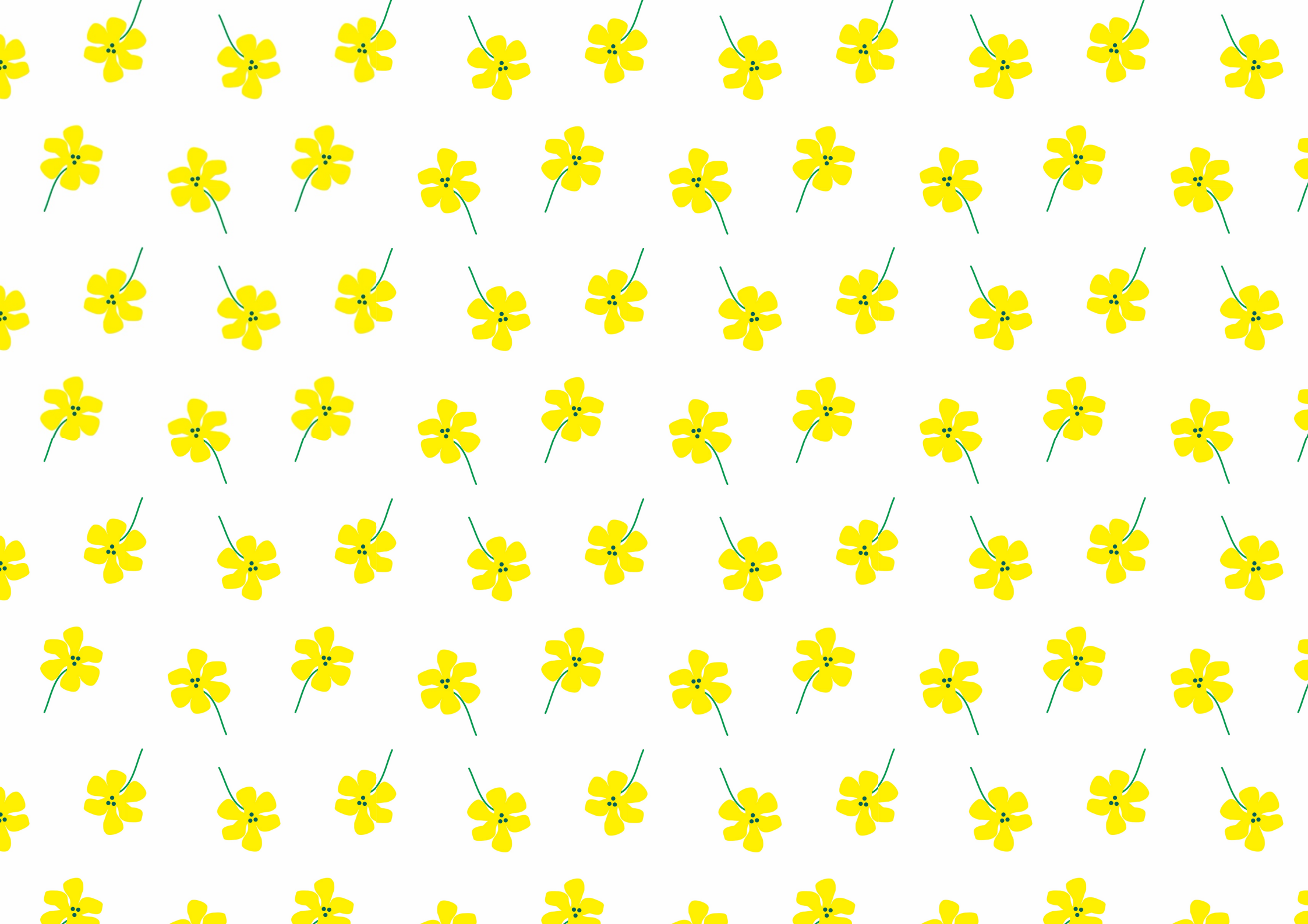
A large, empty rectangular box with a black border, intended for text or a drawing.



A large, empty rectangular box with a black border, intended for text or a drawing.



A large, empty rectangular box with a black border, intended for text or a drawing.





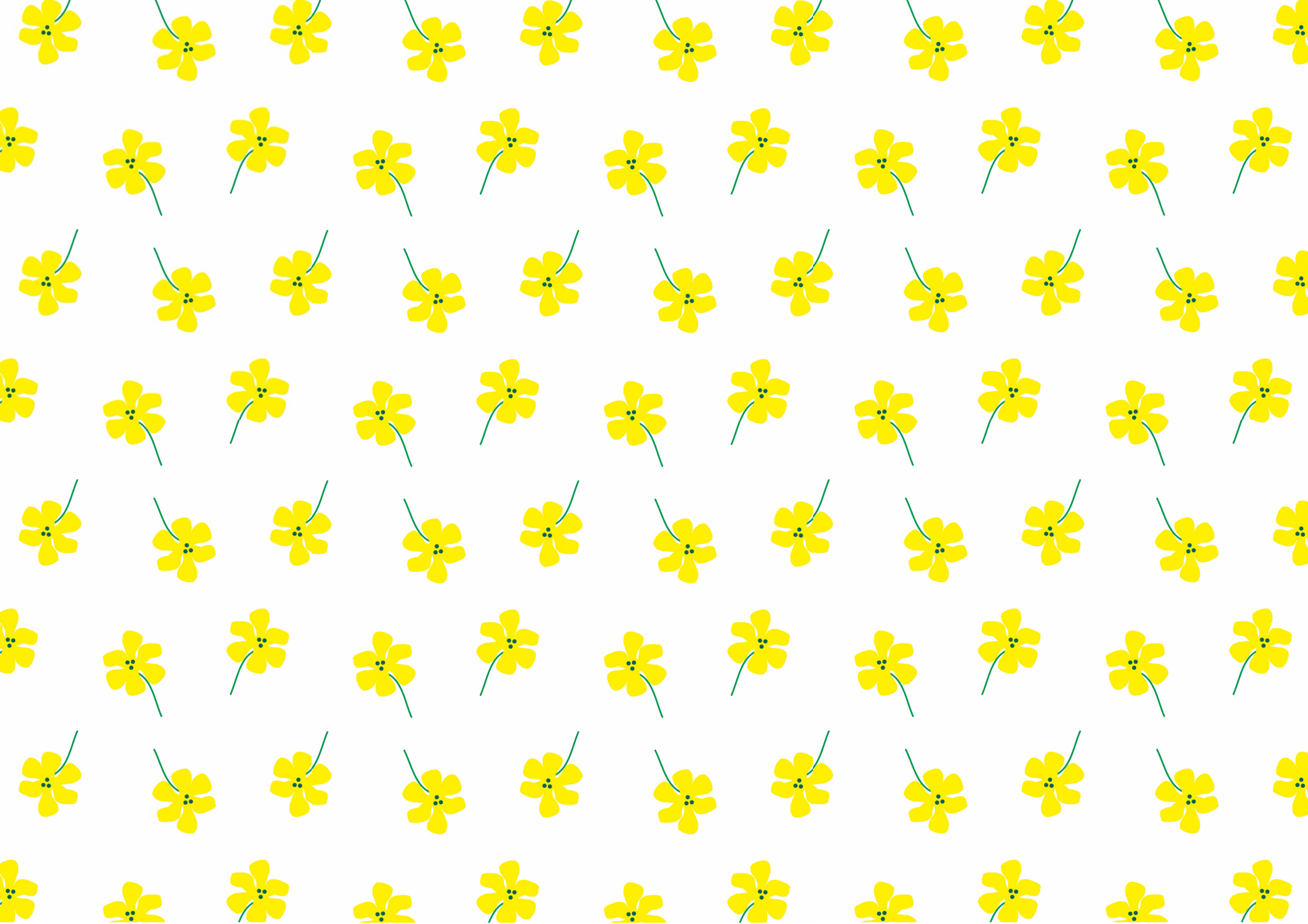
A large, empty rectangular box with a black border, intended for writing or drawing.



A large, empty rectangular box with a black border, intended for writing or drawing.



A large, empty rectangular box with a black border, intended for writing or drawing.



Les promeneurs

sont

joyeux.

Le chevreuil

est

dans la montagne.

Le paysan

répare

son tracteur.

La coiffeuse

coiffe

sa cliente.

La vendeuse

porte

une robe bleue.

L'écureuil

a

une grande queue.





A large, empty rectangular box with a black border, intended for text or a drawing related to the deer illustration.



A large, empty rectangular box with a black border, intended for text or a drawing related to the squirrel illustration.

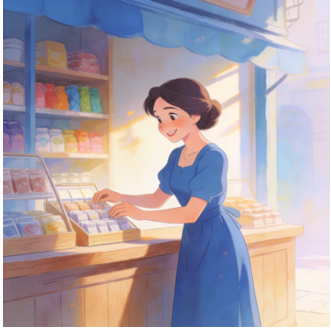


A large, empty rectangular box with a black border, intended for text or a drawing related to the man and tractor illustration.





A large, empty rectangular box with a black border, intended for text or a drawing.



A large, empty rectangular box with a black border, intended for text or a drawing.



A large, empty rectangular box with a black border, intended for text or a drawing.

